

Table of Contents:

President's Message by Jan Liberatore.....1-2

Member Spotlight: John & Pat Skutnik
interviewed by Sue Ivankovich.....2-3

**Wallace Nutting Exhibit at the Cahoon
Museum on Cape Cod**
by Joyce & Joren Fishback.....4-5

Member Tributes.....5

**Identifying Nutting-like Hand Painted
Photographs: The works of Rollin H. McKay**
by Scott Jones.....6

Connecticut Beautiful
by Linda Palmer.....7-13

May 2016 Convention Information.....14-15

Seeking Special WN Picture Titles
initiated by Roz Davis.....15

Wallace Nutting Day
by Linda Palmer.....16-17

2015 WNCC Convention Photo Recap...18-20

WN Furniture Sold at Fairfield Auction
by Linda Palmer.....21-25

Wallace Nutting

Collectors Club Newsletter

The Official Newsletter of the Wallace Nutting Collectors Club

The President's Message

By Jan K. Liberatore



Dear Fellow WNCC Members,

Welcome to the Fall 2015 edition of the Wallace Nutting Collectors Club Newsletter! Sue Ivankovich and our contributing members have put together another great newsletter. Many hours go into our annual newsletter and I hope that you enjoy and appreciate it as much as I do. Thank you to Sue and all of our contributors!

This year has seen a lot of activity with our club and members. In May, we held our convention in Glastonbury, CT and from all reports a good time was had by all. Check out the website, www.wallacenutting.org, for some wonderful pictures of the convention.

Our club Vice President, Sharon Lacasse, along with her husband, Kenny, spearheaded a Wallace Nutting Exhibit at the Cahoon Museum of American Art. The exhibit, Wallace Nutting and the Colonial Revival Movement, ran for several weeks in August, September, and October. It featured a gallery talk by Charles Lyle of the Webb-Deane-Stevens Museum and a gallery tour, led by Sharon and Kenny. The exhibit was heavily promoted by Sharon and Kenny with postcards being sent out to club members and articles written up in *The Barnstable Patriot* and the *Cape Cod Times*. The exhibit not only spread the word about Wallace Nutting and his achievements, but also resulted in at least 8 new club members. Thank you Sharon and Kenny for the countless hours that you put into this exhibit!

In other Nutting news, it was interesting to see the Nutting furniture from the Philip Liverant estate that was sold at auction in September. I was able to make a quick trip to Connecticut to preview the auction. All things considered, the prices realized were fairly strong.

It's not too early to start planning for our 2016 WNCC Convention to be held in Fort Washington, PA. The dates of the convention are the weekend of May 13th – 15th, 2016. We will be staying at the Hilton Garden Inn/Fort Washington, PA. We have found the Hilton Garden Inn to be centrally located with excellent service and also affordable.

It's already shaping up to be another memorable convention, starting off Friday with the Ivankovich Annual WNCC Convention Auction. Saturday morning will bring the Wallace Nutting Marketplace buy/sell/trade session, the annual club meeting, and some great presentations. Please think seriously about bringing a few things to sell at the morning session. It would also be a good time to consign to the Ivankovich auction. The convention auction always brings a large crowd of buyers!

The annual WNCC dinner will cap off our convention Saturday evening and the Hospitality Suite will be open to all members Friday night through Saturday night.

Arrangements with the hotel have been finalized and you'll find information in the newsletter and on our website, www.wallacenutting.org. Please use the following personalized website set up by the hotel to make your reservation: [Click here](#).

Plan your 2016 vacation time to include the weekend of May 13-15. We will be sending out an email with a registration packet for you to download, usually around the beginning of March. In the meantime, feel free to make hotel reservations. Be sure to tell them you are with the WNCC Convention for our special rate.

I would also like to take this opportunity to thank each and every one of you for your help, support, and continued membership in the club.

Best wishes for a safe and healthy winter. Hope to see you all in the spring!

Best regards,

Jan

Jan K. Liberatore, WNCC President

wncenter@aol.com

Member Spotlight:
John & Pat Skutnik
interviewed by Sue Ivankovich



John and Pat are from Ware, Massachusetts and being in the heart of New England they have enjoyed antiquing over the years at the many antique shops, shows, flea markets, and auctions. In their travels, they became interested in Wallace Nutting's works, mainly because of the subject matter and colors of the photographs. They said they reminded them of post cards from the 1950's and 1960's. Some of their early purchases were from long-time club members and dealers, Art Pascoe and Grace Mullin.

Art and Grace gave them information about the Wallace Nutting Collectors Club and Convention that was being held in Portsmouth, Rhode Island in June of 1993. They attended, thoroughly enjoyed it, became members, and the rest is history! They remember this convention as exciting, and said all the people they met were very friendly (and still are!). They were impressed with the knowledge that the fellow members had about Wallace Nutting and his talents. They also feel that the speakers at the conventions add so

much to the understanding and appreciation of this form of art.

Their best buy and favorite picture is taken in Ware, and is a rare cow scene titled "Pasture Dell". Their first purchase was "In New England Uplands" which they had matted (and later learned they shouldn't have!) and framed.

They don't have a particular area of focus in their Nutting collection, they just look for whatever catches their eye. They are however, on the hunt for "The Wealth of May" which is another picture taken in Massachusetts.

They both love to read, and they also have the entire second edition of Wallace Nutting's States Beautiful books, plus "The Cruise of the 800".

John and Pat were born in Massachusetts and have lived there since. John worked at the University of Massachusetts for 40 years, often as the driver for the Chancellor of UMass. Pat taught school for 35 years, starting in a local high school and ending as a Reading Recovery teacher with first-grader's.

They have two sons, two daughter's-in-law and seven grandchildren, all of whom also live in Ware! The youngest grandchild is 5 and the oldest is almost 22.

When asked if they have other hobbies or passions, they said they like to travel. They used to go on Caribbean cruises and now they stay closer to home. One of their grandsons plays competitive baseball and travels around the east coast, so they go to watch the games and enjoy a family vacation.

...And they still love to go to antique shops, shows, flea markets and auctions!

In closing, we're grateful to have John and Pat as our fellow Wallace Nutting Collectors Club members and friends for the past 22 years!



John has been helping us "run" pictures and furniture at our auctions for many years. We're always grateful for his ready assistance!



***Wallace Nutting Exhibit
at the Cahoon Museum on Cape Cod
featuring the Collection of Sharon & Kenny Lacasse***

Write-up and photos provided by Joyce & Joren Fishback

Joren and I went to the opening of the Wallace Nutting Exhibit at the Cahoon Museum on the Cape. Wowie! Sharon and Kenny really outdid themselves – it was a beautiful exhibit of their collection (select photos, memorabilia, furniture and more). Sharon also wrote informative signs about Nutting and the Colonial Revival that hung on the wall as you entered the exhibit. Beside the exhibit there was a gallery tour hosted by Kenny and Sharon on September 22nd and a talk by Charles Lyle (who spoke at our convention last May) on September 15th. The link below is to an article in the Cape News about the exhibit. Kudos to Sharon and Kenny!

http://www.capenews.net/arts_and_entertainment/nutting-collection-at-cahoon-museum/article_5846f2ca-478e-11e5-95f5-af633f4e63b0.html





***Tributes to
Lin Winters and Lorraine King***



Sadly, we have lost two more members and good friends this year. Lin passed in July and Lorraine just recently in November.

We will miss these special ladies who made many friends over the years through their shared love of collecting Wallace Nutting.



Identifying Nutting-Like Hand-Painted Photographs

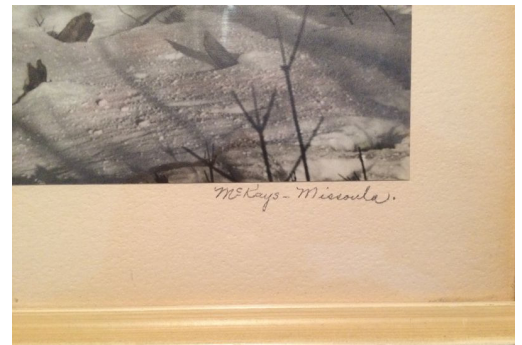
The works of Rollin H. McKay (McKay Art Company) 1878-1960

By Scott Jones

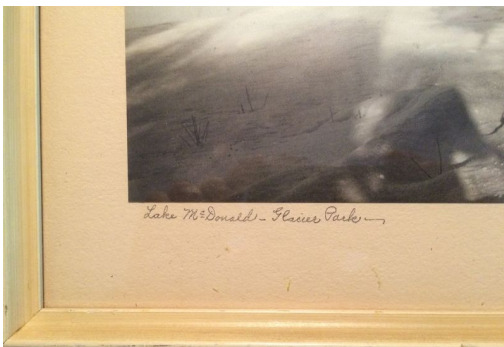


Located in the hub of the five valleys in Big Sky country is the city of Missoula, Montana. Missoula served as the home of Rollin H. McKay, owner and operator of the McKay Art company from 1911 until his eventual retirement in 1946.

Rollin was born Nebraska on November 19, 1878 and served as a barber in Missoula after emigrating there from Coos Bay, Oregon in 1905. He began his company in 1911 and is widely known for photographing western Montana's land marks and scenery. Rollin started his photography business in the footsteps of fellow noted Missoula photographer F.M. Ingalls, and actually started his business in the exact same location as Ingalls, in the First National Bank building located at the corner of



Higgins Ave and Front Street. He built a new studio in 1924 at 120 North Higgins Street. He produced and sold prints in both black and white and in hand-tinted formats. McKay Art company photos can also be found printed as postcards. He is best known for his Missoula-area photos and his black and whites of native Americans.



McKay was not only a photographer but also an active community member. He served on the Chamber of Commerce in 1929, was an Elks Club member, a Rotary Club member, and a mason. He also had a significant role in starting the Boy Scouts of western Montana. The University of Montana has around 5000 of McKay's photos in its Archives, as he also served as a photographer for the University. McKay had a wife, Ethie, and daughter, Bettie, and when Rollin retired in 1946, his son-in-law, Richard C. Butler ran the business for several more years. Rollin passed away in Missoula on February 21, 1960.

Title (left) and signature (above right) for this beautiful deer by the lake photo.



Picture at right is of McKay beside his camera on a mountain ledge.



Connecticut Beautiful

By Linda Palmer

The first edition of **Connecticut Beautiful** was published in 1923 by Old America Company in Framingham, Massachusetts.

It is dedicated to: "The Connecticut Historical Society To Whose Collections and Archives Of Such Great Value This Little Collection of Connecticut Pictures Of Small Account Is Gratefully Added."

The Connecticut Historical Society was originally housed at the Wadsworth Atheneum at 600 Main Street in Hartford until it moved in 1950 to its present location at 1 Elizabeth Street in Hartford. Connecticut is known as "The Constitution State" and consists of 169 towns and 8 counties. Nutting includes 304 pictures from all 8 counties in **Connecticut Beautiful**.

Nutting says he lived in Connecticut for 8 years, and he owned what is now known as Heritage Village in Southbury from 1906 to 1912. He named his home "Nuttingham", and first started taking hand



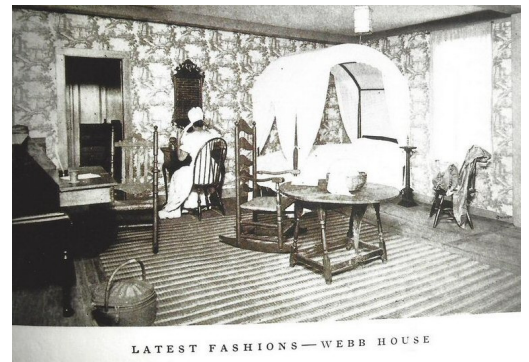
UNDER THE BLOSSOMS—SOUTHURY

colored photographs in Connecticut. In "Summer Wind" on page 19, Nutting erected a dam wide enough to drive over just below "Nuttingham" to create a "dear little pool". "Under the Blossoms" on page 27 is a sheep picture taken in Southbury, CT. Nutting kept these sheep for aesthetic reasons only and coaxed them into the fields to pose for a picture by scattering feed on the grass. "The Maple Sugar Cupboard" on page 28 was taken at Nuttingham in the "Home Room" and was the start of Nutting's interior colonial pictures. "The Wolcott Homestead" on page 68 was taken in Litchfield, CT. Oliver Wolcott is famous as a signer of the Declaration of Independence.

We moved to Kent, CT in 1976, but we have always lived in Connecticut. Kent is famous for its art galleries, three state parks, and three private schools. Nutting

took pictures at Macedonia State Park and Kent Falls State Park. "A Connecticut Cascade" on page 251, and "Sky Brook" on page 288 were taken at Kent Falls State Park.

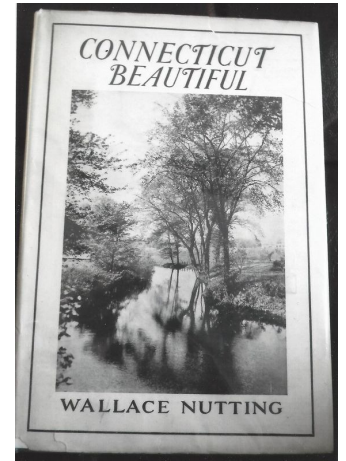
On page 198, "The Webb House at Wethersfield, which used to be called Hospitality Hall, a name of which any family might be proud, is a fine example of its period, 1752. Here Washington states in his diary that he remained at one time for five days planning, with the French, the campaign of Yorktown which resulted in the victory of American arms and the end of the Revolutionary War." He purchased the Webb House in 1916 as the last of his five houses in the Wallace Nutting Colonial Chain of Picture Houses. Wallace Nutting "expended a large labor of love upon this house, when it was in his hands, before the great war, and tried faithfully to bring things back to their original condition." He refers to the Webb House as "...perhaps the most interesting historical memorial in the state." In 2016 Charles T. Lyle, the Executive Director, Webb-Deane-Stevens Museum will celebrate 100 years since Wallace Nutting purchased the Webb House. Wallace Nutting then moved to Framingham, Massachusetts.



LATEST FASHIONS—WEBB HOUSE

Wallace Nutting states, "Connecticut stands alone in having preserved for America many of the finest traditions, not only in politics and religion, but in mechanical excellence wedded to good taste." By writing **Connecticut Beautiful** he hoped to encourage a few people to maintain the best of the past, and to retain a record of that which is passing away. He felt a pictorial history of Connecticut was more accurate and readily understood by future generations. Wallace Nutting spearheaded the Colonial Revival Movement, and sought to preserve history and beauty.

A Kent, CT author, Donald S. Connery wrote in, One American Town published in 1972: "And all too often what one does hear only bears out an observation made by Wallace Nutting nearly half a century ago in his book Connecticut Beautiful: 'Despite the spread of newspapers, there is no small contingent of the population without the stimulus of public opinion, and who fall back on their own narrow interpretation of life.'"



Pictures in Connecticut Beautiful Listed Alphabetically by Town

Branchville

Ribbon Lane, page 80

Bridgewater

Elm Drapery, page 64

Broad Brook

Enticing Waters, page 12
On Broad Brook, page 55
Summer Grotto, page 36
Summer Wealth, page 295
Water Witchery, page 48

Brookfield/Brookfield Center

Brookfield Banks, page 200
Brookfield Door, A, page 188, 175
Whisconier Road
Brookfield Hall, A, page 204
Guardians of the Shore, page 268
Tufted Meadow, A, page 259
Very Dutch, page 244, Whisconier Road

Brooklyn

An Abandoned Road, page 204
Hill Farm Elms, page 220

Canaan

Canaan Curves, page 107
Canaan Pasture, A, page 100
The Waters of Canaan, page 104

Chaplin

A Turbulent Creek, page 179

Chatham

Highlands of the Connecticut, page 224
An Orchard Path, page 272

Cheshire

In Tender Leaf, page 16
Lingering Waters, page 24

Chesterfield

A Blossomy Shore, page 227

Cornwall

A Cornwall Wayside, page 231

Coventry

A Hillside Homestead, page 247

Cromwell

Spring Shadows, page 180

Danbury

Elm Luxuriance, page 219

Deep River

A Deep River Cove, page 203

East Hampton

A Bright Corner, page 215

Fairfield

A Fairfield Lane, page 15
From The Hill, page 12

Farmington

A Farmington Door, page 52

Gildersleeve

A Village Green, page 259

Glastonbury

A Glastonbury Spring, page 220
A Little Home, page 267

Greenwich

Greenwich Waters, page 188
Singing Stones, page 160

Griswoldville

An Alluring Road, page 252
Deepdene Waters, page 175
A Gate of Joy, page 240
A May Curve, page 224

Haddam/East Haddam/Middle Haddam

Colonial Street – Middle Haddam, page 283
Connecticut Oak Majesty, page 131
Grandfather's – East Haddam, page 219
Haddam Elms, page 123
A Palladian Gable, page 223

Hartford/East Hartford

The Charter Oak, page 295
Commercial Connecticut – East Hartford, page 183
A Connecticut Corner – East Hartford, page 264
Connecticut in Spring – East Hartford, page 227
Hartford Blossoms, page 136
In Early Leaf, page 208
Path, Blossom, and Canal – East Hartford, page 168
A Spring Nest – East Hartford, page 168
The Turn of the Creek – East Hartford, page 228
Wildwood Blossoms – East Hartford, page 164

Hartford County

The Joy of the Forest, page 167

Jewett City

On The Quinnebaug, page 103

Kent

The Annual Revival, page 271
Back Field Beauty, page 203
A Connecticut Cascade, page 251
A Connecticut Vale, page 255
Decorations of the Valley – Macedonia, page 255

Mountainside Pasture – Kent, page 244
Mountain Snow - Kent, page 248
Sky Brook, page 288
Tumble Down Dale, page 272
Water Stairs, page 232
Water Sprites' Ladder, page 207

Litchfield

Litchfield Brook, page 115
A Litchfield Porch, page 35
A Litchfield Street, page 96
Two Litchfield Doors, page 32
Where The Cows Go Home, page 107
Wolcott Homestead, page 68

Litchfield County

August In The Meadows, page 95
The Autumn Road, page 136
A Draped Road, page 120
Filling The Pitcher, page 120
The Golden West, page 71
A Maple in May, page 24
An Old Fashioned Village, page 20
The Road or the Byway?, page 95
Shadow of the Blossoms, page 108
A Summer Dream, page 92
Up The Cow Lane, page 148
Where Grandma Was Wed, page 75

Long Hill

Between the Blossoms – Long Hill Road, page 71
Over The Lane, page 43

Lyme

The Little Pass, page 280

Manchester

Blossom Cove, page 47
Brookside Blooms, page 39
Elm Silhouettes, page 291
A Little Bay, page 239
A Little Peninsular, page 87
Meadow Blossoms, page 63

Meriden

Connecticut Cliffs, page 267
A Framed Brook, page 264
Meriden Cliffs and Waters, page 187
Meriden – Stonington Road, page 139
Meriden's Lake, page 216
Strawberry Bank, page 236
Under The Hills, page 187

Middlebury

Blossom Pond, page 183
Down to the Lake, page 231

A Highland Pool, page 248

A Middlebury Roadside(sheep), page 152

Middlesex County

The Exuberance of May, page 171

The Shaken Mirror, page 232
Sliding Waters, page 184

Middletown

The Buttonwood Tree, page 184
The Countryside, page 287
The Heart of the Wood, page 240
River Bank Drive, page 176
River Haze, page 191
Skirting the Arrowana, page 179
Stately Old Connecticut, page 176
A Tufted Peninsular, page 247

Milford

Milford in the Hills, page 291

Mystic/Old Mystic

Draped in Blossoms, page 27
An Embowered Cottage, page 119
Homestead Blossoms, page 40
Locust Cottage, page 35
An Old Mystic Back Water, page 152

Newfields

An Ancient Wood, page 196
The Blooming Meadow, page 276
Homestead Blossoms, page 235
Rivulet Farm, page 216

New Haven

Harkness Quadrangle, page 159
Jonathan Edwards Door – Yale, page 140

New Haven County

An Abandoned Lane, page 195
All the News and More, page 163
A Blossom Lane, page 135
Brook Music, page 192
A Canopied Bridge, page 260
A Housatonic Bow, page 268
A Lean-To Among Blossoms, page 155
A Wayside Pool, page 143

New London

The Mill, A.D.1653, page 68

New Milford

Between the Buttonballs, page 243
The Buttonball Bough, page 283
A Rippling Bend, page 260
A River Sycamore, page 263

Newtown

Cottage, Bloom and Brook, page 51

Dell Blossoms, page 36

The Last Furrow, page 28

Over The Wall, page 31

Norfolk

Blossom Rill, page 288
A Little Cascade, page 208
Play After Work, page 200

Norwalk

A Little Old Home, page 44
Pink, Blue, and Green, page 11

Norwichtown

A Lane in Norwichtown, page 91
Norwichtown, page 127

Nyack

Unloading The Stack, page 124

Oxford

The Cottage on The Floss, page 87
A Roadside Apple Tree, page 76

Pomfret

The Meeting of Minds, page 211
Pomfret Waters, page 76

Portland

Cedar Pasture, page 195
Meadow Waters, page 275

Putnam

The Falls at Putnam, page 15

Redding

The Glen Brook, page 156
The Glen Pass, page 180
The Redding Glen, page 160

Ridgefield

An All-The-Year Cottage, page 287

Salem

At the Pour-Over, page 164
Crest Cottage, page 239
A Little Old Dam, page 172

Sandy Hook

Going To Work, page 72

Sharon

Sharon Bridge, page 275

Shelton

Golden Autumn, page 80
A Shelton Brook, page 116

Simsbury

A Memory of Childhood, page 83

Somers

Somers Waters, page 140

South Britain

By The Meadow Gate, page 48

Pomperaug Banks, page 115

Still Depths, page 56

Waters Meet – Pomperaug River, page 99

Southbury

All Curves, page 284
The Crab Apple, page 67

The Maple Sugar Cupboard, page 28

Nuttinghame in Spring, page 284

Old Connecticut, page 119

Overbrook(Nuttinghame), page 139

A Sip of Tea, page 79

A Southbury Barnyard, page 88

Summer Wind, page 19

Under the Blossoms(sheep), page 27

We're Young, page 63

Stonington

An Oak Shore, page 124

Talcottville

Blossom Bend, page 74

Blossoms At The Bend, page 31

A Chimney At Each Corner, page 20

Torrington

Lily Pad Pool, page 144

Wallingford

Wallingford Street, page 84

Waterbury

Bowered, page 44

Wethersfield

At Wethersfield(#109), page 56

Doughnut Day – Webb House, page 151

Grandmother's Sheffield, page 108

The Great Wethersfield Elm, page 292

The History of the Revolution – Webb

House, page 155

Hospitality Hall(Webb House), page 147

An Inspiration, page 111

Latest Fashions –Webb House, page 151

Lilac Gables, page 144

Old Homes, Old Trees, page 215

Reading In A Wing Chair – Webb House,
page 147

Uncle Nathan's, page 256

The Yorktown Parlor, Webb House, page
148

Winchester

Breaking A Way, page 196

Windham

Double Walled Lane, page 276

Windham County

Dell Dale Road, page 40

Field Lane, page 100

Wedding of Waters, page 256

East Windsor/South Windsor/Windsor

Beyond the Pond, page 280

East Windsor Waters, page 128

May Shores – Windsor, page 252

The Pond in May – South Windsor, page
228

Skirting The Pool, page 111

Spring Lights – South Windsor, page 167

The Sunlit Pool, page 128

Up the Vale, page 175

Winsted

Neglected Beauty, page 199
 They Grew in Beauty Side By Side, page 223

Unknown Pictures in CT Beautiful

Page 60 An Old Back Door
 Page 64 Blossom Cottage
 Page 67 Housatonic Shadows
 Page 79 The Unbroken Flow – Pomperaug River
 Page 84 Housatonic Broads
 Page 88 Light On A Dark Subject
 Page 91 Early Summer – Pomperaug River
 Page 92 On The Way To Cold Spring
 Page 96 Among The Litchfield Hills
 Page 99 Clouds Over The Housatonic
 Page 104 The Greeting
 Page 112 Childish Reflections
 Page 112 Rummaging In The Attic
 Page 116 A Connoisseur
 Page 123 Facing The Light – Near Mystic
 Page 132 The Heart Of New England
 Page 132 On The Farmington River
 Page 143 New Life (sheep)
 Page 156 The First Leaves – South Shore
 Page 163 A Picture Brook – South Shore
 Page 172 Flower Of The Lily (floral)
 Page 188 Greeted At The Gate
 Page 191 A Little One For The Twins (furniture)
 Page 192 Boys Fishing
 Page 211 Is The Fire Ready?
 Page 212 Creek Banks In Spring
 Page 236 Musical Waters
 Page 292 Charter Oak Chair

Woodbury

A Hint of September, page 83
 Home Lane, page 23
 Slack Water, page 59
 Who’s In The Parlor?, page 72
 Woodbury Banks, page 60
 Woodbury Blossoms, page 55
 Woodbury Waters, page 127
 Up the Path, page 52

Old House Sketches Drawn from Original Photographs

Page 9 A Hewn Overhang – Madison
 Page 13 A Homestead On The Naugatuck
 Page 14 A Durham Overhang
 Page 17 Nearing Home – Newtown
 Page 21 A Stratford Hewn Overhang
 Page 25 An Old Stratford Gable
 Page 29 Public Edifice – Colchester
 Page 33 Doorway At Hampton
 Page 41 The Woodbury-Southbury Road
 Page 45 House on New Britain-Hartford Road
 Page 46 Old Huguenot House – New London
 Page 53 A Dutch Cottage – North Haven
 Page 54 A Salem Gambrel
 Page 61 A Wilton Homestead
 Page 62 Interesting Sign – Old Saybrook
 Page 65 Overhang House – Farmington

Woodstock/South Woodstock

The Corner of a Common, page 279
 Hamilton Holt Kitchen, page 199
 A New England Common, page 212
 An Old Connecticut Inn, page 279

Page 70 Dwelling With Overhang – Colchester

Page 73 Thomas Lee House – East Lyme

Page 77 A Gable at Groton

Page 82 A Cos Cob Door

Page 85 Middle Haddam Library

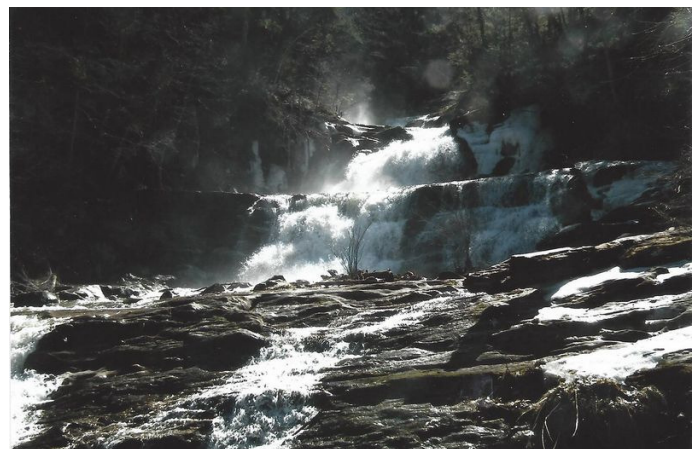
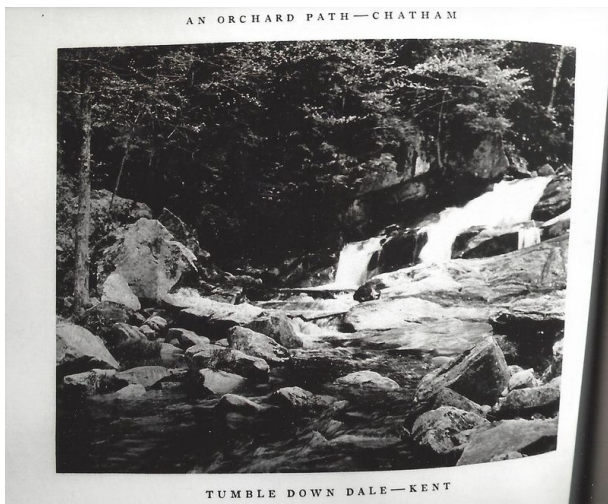
Page 93 A Connecticut Gateway

Page 106 A Cottage in Willimantic

Mildred Hobbs Poems

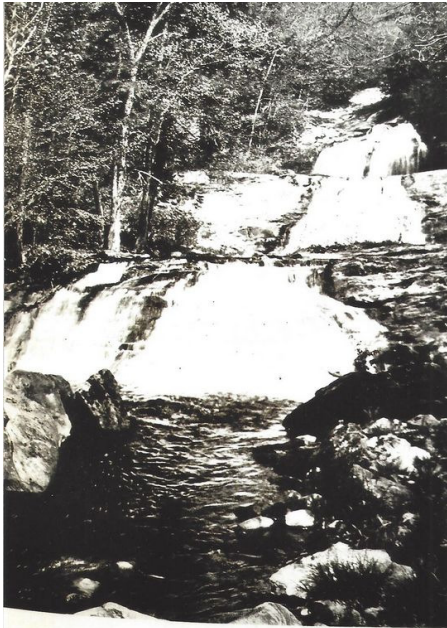
Page 22 The Orchard Lane
 Page 50 Blossom Dale
 Page 86 Still Waters
 Page 121 Whither?
 Page 122 The Home Road
 Page 125 Lake-Side
 Page 126 The Meadow Stream
 Page 130 The Acorn Tree
 Page 142 The New Life
 Page 149 New England Walls
 Page 294 Supper-Time

Note the following 8 photos from Kent Falls State Park, Kent, CT: left one taken by Nutting in the 1920's and included in the Connecticut Beautiful Book, while the corresponding one on the right of the same location taken more recently by Linda.

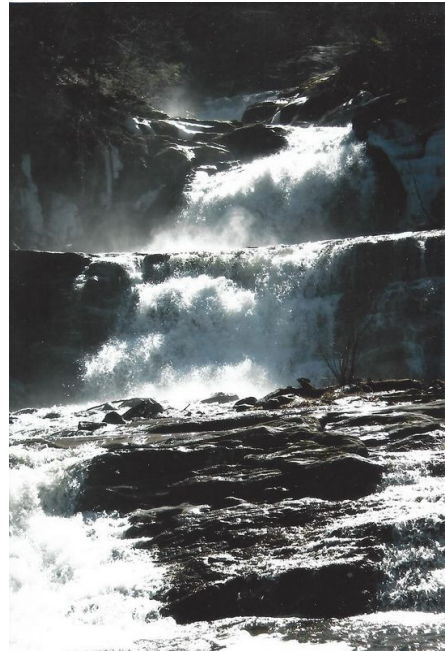




MOUNTAIN SNOW—KENT



WATER SPRITES' LADDER—KENT

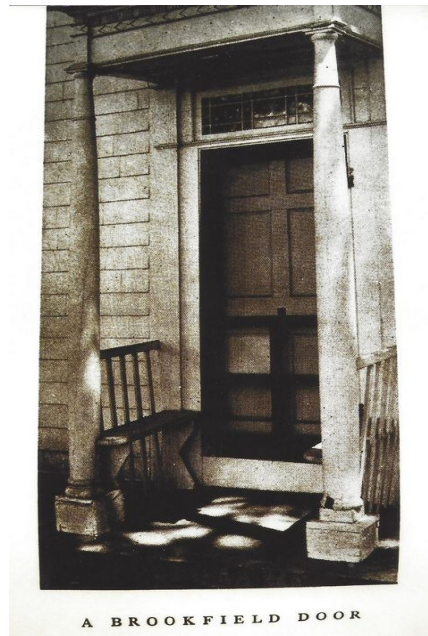
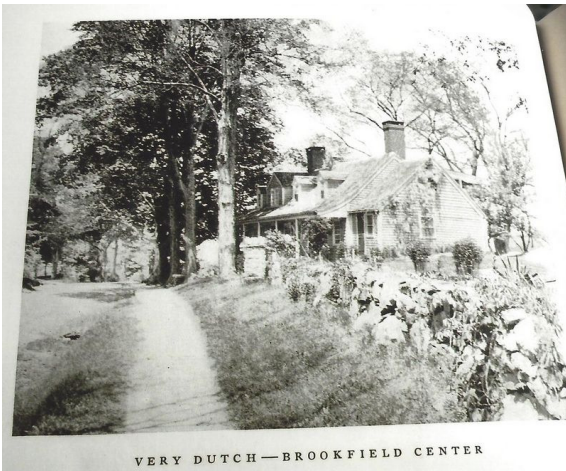


A CONNECTICUT VALE—MACEDONIA





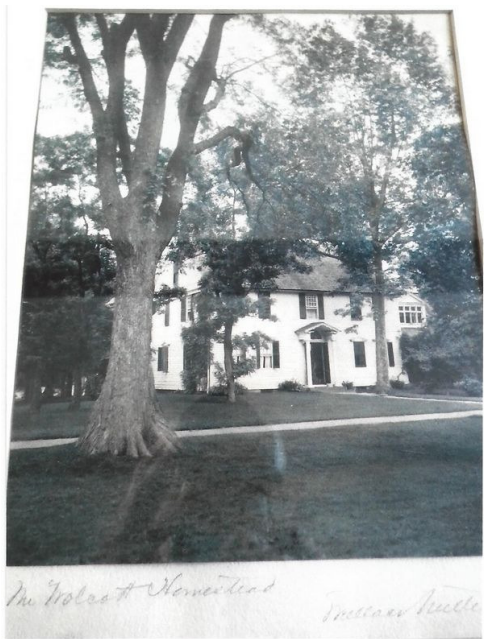
These 6 photos are taken on Route 25, Brookfield Center, CT: same positioning as above...left one taken by Nutting and included in CT Beautiful, with the corresponding one on the right of the same location taken more recently by Linda.



This house, where the porch doorway with benches still stands today, is called Fairchild Homestead.

Linda also noted that it's from 1815 and referred to as: "CANDLEGLOW"

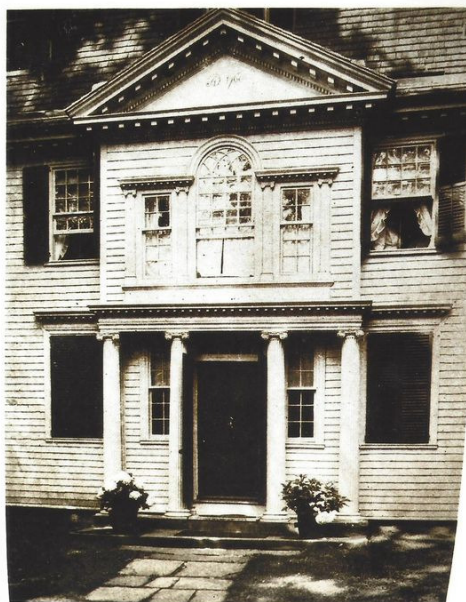




These 4 photos are taken in Litchfield, CT:
 in Wallace Nutting's day and more recently.

Top left and right pictures are of the Oliver Wolcott House located at 89 South Street (Rt. 635).

Left and right are taken at 73 North Street.



Two pictures below taken at Nutting's Southbury, CT home, "Nuttinghame"



THE MAPLE SUGAR CUPBOARD

NUTTINGHAME IN SPRING

Mark your calendars for the 2016 Convention!



May 13-14th
Hilton Garden Inn
 530 Pennsylvania Avenue
Ft. Washington, PA 19034



(215) 646-4637

Special Room Rates:

1 King or 2 Queen beds at \$124.00 USD/Night + tax
 (mention you are with Wallace Nutting Collectors Club Convention for this group rate)

(Book by April 12th to reserve your room)

Click here to make a hotel reservation on the Hilton Garden Inn's personalized page with the special rate given to Auction and Convention attendees.

Agenda details to be announced and posted on the WNCC website as they become available
<http://www.wallacenutting.org/convention.html> or copy/paste URL into browser

- Friday, May 13th:** Michael Ivankovich Auction
- Saturday, May 14th:** WNCC Convention including:
- Buy, Sell, Trade expanded Marketplace
 - Business Meeting
 - Presentations
 - Bus trip and lunch in New Hope/Lambertville (see below)
 - Annual Club Dinner
 - Hospitality Suite

Wallace Nutting took many photographs of the bucolic Bucks County, PA area. The focus of our bus trip will be to point out some spots where he took pictures



along our way to New Hope, which is located on the scenic Delaware River, another of Nutting's favored subject matter.

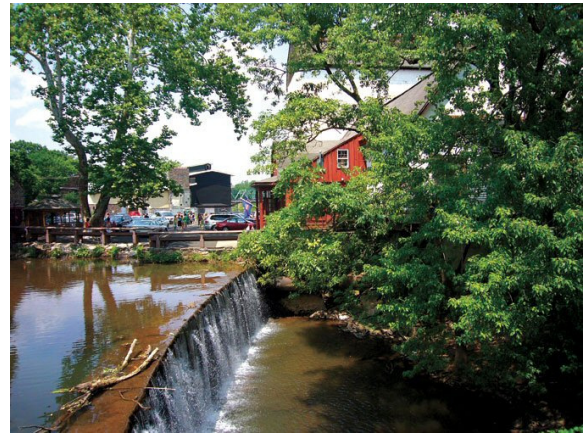
You'll then have the opportunity to explore the quaint and lovely towns of both New Hope PA and Lambertville NJ, each of which have numerous restaurants, shops, and antique stores. They are located



directly on either side of the river, and there is a connecting car/walking bridge.

And on the way back to the hotel we'll pass through Washington Crossing National Park, where George Washington crossed the Delaware River to surprise the Hessians on Christmas night in 1776.

(See more pictures of New Hope/Lambertville below. Further details with suggestions of places to go, where to eat, and maps will be provided during Saturday's morning presentations)



Seeking Special Wallace Nutting Picture Titles From Members



Roz's Christmas picture above

Fellow member, Roz Davis, recently wrote a note and said, *"It is time to share 'Christmas Greetings' with other Wallace Nutting Collectors. I wonder how many other Christmas prints we have as a club and would anyone like to share their titles?"*

Mike & I thought this was a great idea and he suggested that it could be expanded to all holidays that WN may have used in his titles, including "Christmas", "Thanksgiving", "Easter", "Birthday", "Anniversary", etc.

I think it would be fun if we go even further and extend our search to seeking out titles that include the months, i.e. there were many pictures that had "June" in the title, or how about "May", "September", "October"...just to name a few?

Who has any of these holidays or months-of-the-year picture titles? Please share, along with photos as well, and we'll include in the next publication.

In the meantime, I join Roz in wishing **Christmas Greetings** to all!!



Wallace Nutting's, "Christmas Welcome Home"

Wallace Nutting Day

By Linda Palmer



Wallace Nutting Day was held on July 25, 2015 at the Major Joseph Griswold House aka Mary Lyon House, located at 8 Old Upper Street, Buckland, MA. The day was beautiful, and our gracious hostess was WNCC member, Sue Samoriski. About ten people attended, including fellow WNCC member, Rebecca Carlson from Pomfret, CT.

I first visited the Griswold House in 1997, when I was researching an article on Marietta Griswold Caswell Nutting. The house was owned by sisters, Jane and Roberta (Bobbi) Griswold. Sue Samoriski and her husband purchased the home, and have lovingly restored it. Marietta Nutting was born in this house on September 29, 1853, the daughter of Josiah W. Griswold and Ann Eliza Davis.

The Asher Benjamin fireplace is on the first floor. He was an American architect and author of seven handbooks on design. The Wallace Nutting Room is on the second floor and is decorated with Wallace Nutting prints. It is in this room that Wallace Nutting courted Marietta, and where they stayed after they were married.

The barn is still standing where Marietta Griswold, as a young girl, jumped from the hayloft and got caught on a hayfork. The third floor ballroom is restored as a school room, where Mary Lyon, who founded Mt. Holyoke College, taught school.

We then walked a short distance to the Buckland Public Library, where Wallace Nutting prints hang on the walls. There is a plaque with Marietta Nutting listed as a principal donor to the library in 1944.



Josiah Griswold, Marietta Nutting's father. Note how similar the home still looks, from the 1800's compared to 2015!



Wallace Nutting Bedroom

We all enjoyed a delicious lunch, prepared by Sue Samoriski's daughter. This house is listed on the National Historic Register.

The gardens are beautiful! Sue told us that the house is haunted by a benevolent spirit. The proceeds benefited local nonprofits.



Sue Samoriski, right, showing the Wallace Nutting photos

(more photos continued on next page)



Buckland Public Library



The barn where Mariet Nutting jumped from the hayloft



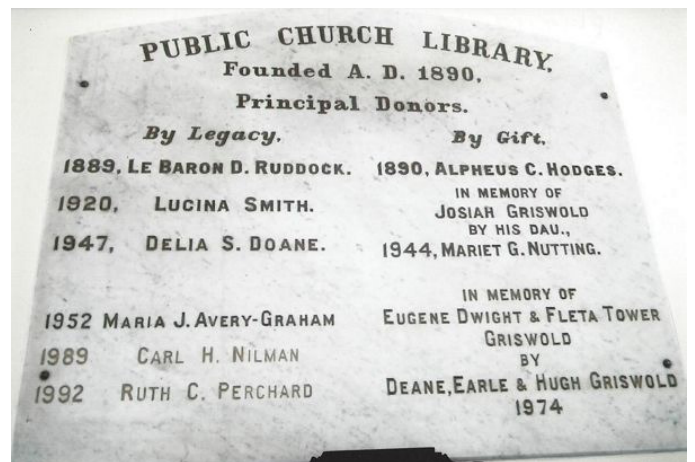
The Josiah Griswold House is listed on the National Historic Register



Sue Samoriski giving the house tour



Asher Benjamin Fireplace in the Griswold House



Plaque in the Buckland Library with Mariet Nutting listed

***Photo Recap of the
2015 Collectors Club Convention***



Wallace Nutting faces everywhere...kudos to Kenny Lacasse's creativity!



Table of members at Saturday night's Club dinner



Charles Lyle discusses WN, Preservation Pioneer, on Sat. AM

Some photos from Saturday morning's Buy-Sell-Trade and Presentations



Mike Pellegrino talks about David Davidson and his extensive collection of photographic equipment



Saturday afternoon's tours of the Webb-Deane-Stevens Museums. Joseph Webb House above.



Silas Deane House



Isaac Stevens House

***The Phil Liverant
Wallace Nutting Furniture Collection
sold at Fairfield Auction
Monroe, CT - Sept. 2015***

Photos and prices (including buyer's premium)
reported by Linda Palmer



Polychromed Oak Pilgrim Cupboard: \$6000



#911 Oak Sunflower Cupboard: \$4080



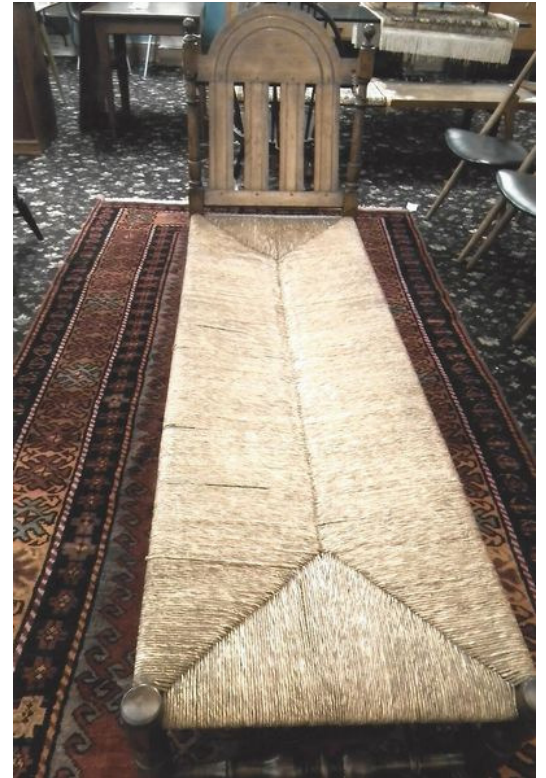
Brewster Chair: \$3600



#935 Oak Hadley Chest: \$4320



#931 Sunflower Blanket Chest: \$3840



#825 Day Bed with rush seat (unmarked): \$240



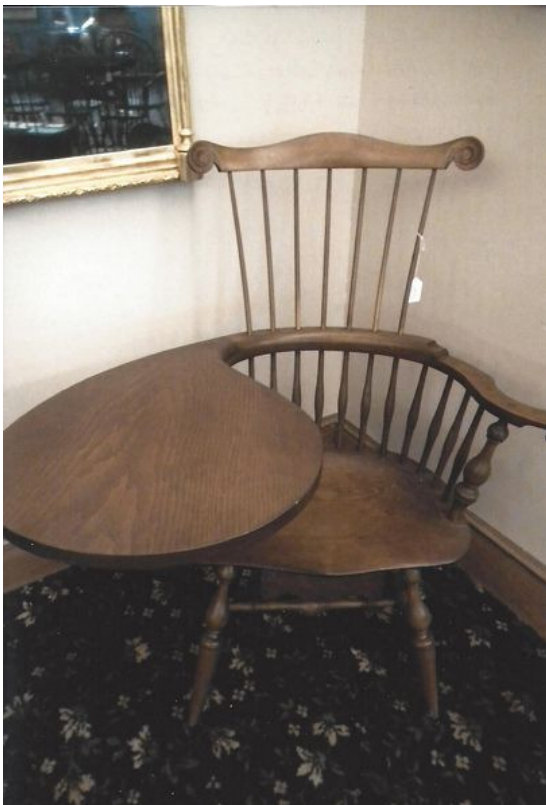
#333 Set of 6 Comb-Back Windsor Side Chairs: \$1080



#589 Wainscot Settle: \$780



Sharon & Kenny Lacasse: priceless!



#451 Writing Arm Windsor Chair with Drawer : \$330



#698 Queen Anne Walnut Server: \$720



#309 Set of 4 Windsor Chairs (all with paper label): \$1140



#613 Maple Table with Pine Top: \$390



Pair of Stools and Stand (unmarked): \$570



Windsor Settee: \$210



#590 Double Seat Settee: \$330



3 Children's Chairs: \$1440



#401 Pair of Windsor Armchairs with Continuous Arm: \$420



#493B Pair of Pilgrim Chairs: \$570

**The Wallace Nutting
Collectors Club
Newsletter**

is published annually by the:

**Wallace Nutting
Collectors Club**

121 Orchard Hill Road
Elmira, NY 14903

e-mail address:

wncc@anchorstatebank.com

Membership Dues:

\$30 annually

Newsletter Editor:

Sue Ivankovich

sue@wnutting.com

Board of Trustees:

Jan Liberatore, President
Sharon Lacasse, Vice President
Jim Eckert, Treasurer
Joyce Fishback, Secretary
Pam Franscella, Trustee
Sue Ivankovich, Trustee
Ron Leavesley, Trustee

**Founders of the Wallace
Nutting Collectors Club:**

the Late George & Justine Monro

Web Address:

www.wallacenutting.org



Wallace Nutting 1861-1941

From the Newsletter Editor...

Many thanks to Linda Palmer, Scott Jones, Joyce & Joren Fishback, and Roz Davis who provided articles and photos for this issue. And of course thanks always to President, Jan Liberatore, for his newsletter lead-off messages and superb guidance with our Club.

Please help with the continuation of the Club Newsletter by contributing articles, photos, regional auction results, fun information...any and all of the above. It doesn't have to be a lengthy article...we just appreciate your input! If you have some thoughts or suggestions, e-mail or call so I can plan for next year's Edition.

Sue Ivankovich
P.O. Box 1536 * Doylestown, PA 18901
215-345-6094 * E-Mail: sue@wnutting.com