

Fall/Winter 2009

Volume 13, Issue 24

Table of Contents:

The President's Message from Jan Liberatore.....	1
Member Spotlight ~ Marion & Harry Bejian by Linda Palmer.....	2-5
Mystery of W.R. Nutting Postcard by Barbara & John Snyder.....	6-13
"Comfort"...and..."A Cat" Ruth & Dieter Tannenber.....	14-15
Finding the Wallace Nutting House and Betsy Williams Cottage Palmer's and Bejian's	16-17
May 2010 Convention.....	18
Tribute to Don Lee.....	19
Photos from the Nov. 6-7th Auction in Danbury, CT.....	19-20

Wallace Nutting

Collectors Club Newsletter

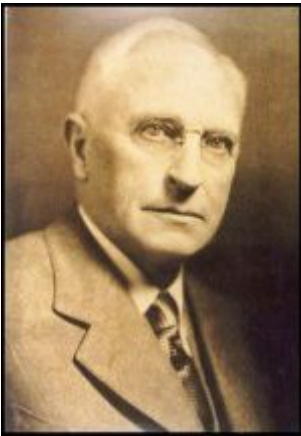
The Official Newsletter of the Wallace Nutting Collectors Club

The President's Message

From Jan K. Liberatore



Fall/Winter 2009



I am very pleased to announce that due to the success of this year's convention, the 2010 WNCC Annual Convention will once again be held at the Hilton Garden Inn in Glastonbury, Connecticut. Not only is the Hartford, CT area centrally located to our membership, it has evolved into a center of Wallace Nutting activities. This year we visited the famous Webb House once owned and restored by Wallace Nutting. The preliminary plan for next year is to visit the Wadsworth Atheneum, home to the Wallace Nutting Collection of Early American Furniture. I'm sure some of us will also visit the Webb House again!

The Hilton Garden Inn is an excellent hotel with superb service. Please book your rooms early as I am sure our block of rooms will fill up fast. The dates of the convention are May 14 & 15, 2010. You will find more info in this newsletter.

HELP! This is your club and we need help. Foremost we are in need of your newsletter materials and also speakers for the convention. Please contact Sue Ivankovich at ivankovich@wnutting.com for any newsletter articles, photos, info, etc. and Jan Liberatore at wncenter@aol.com if you could give a short talk at the convention. Thanks, we really need your help with this to continue the success of our club!

Have you noticed what a great time this is to be a buyer of just about anything? Well Wallace Nutting pictures and furniture are no exception. Mike and Sue Ivankovich held their November auction in Danbury, CT. There was a nice crowd of our Wallace Nutting friends in attendance with some strong prices in evidence, but also some great bargains to be had. Now would be a good time to introduce a friend to Wallace Nutting and to get them started with some nice exteriors at reasonable prices.

My thanks to everyone who contributed to this newsletter and especially to Sue Ivankovich for going above and beyond to pull it all together! Have a safe and enjoyable holiday season, stay warm this winter, and we'll be in touch after the new year with more details on the convention.

Jan K. Liberatore
wncenter@aol.com

Member Spotlight on Marion & Harry Bejian

Top Rhode Island Collectors

Written and photographed by Linda Palmer



Harry Franklin Bejian and Marion Judith Papp met at a high school graduation party in Rhode Island and dated for two years. Harry asked Marion's father for permission to marry his daughter. They were married June 15, 1958 in the Roger Williams Baptist Church, and have been happily married for fifty-one years.

They were blessed with two daughters, Susanne Jordan and Sharon Cassidy. Susanne lives in Wallingford, CT and has two daughters, Jessica, fourteen years old and Jillian, eleven years old. Sharon lives in Bangor, Maine and has two sons, John, sixteen years old and Cullen, thirteen years old. Marion and Harry have lived in the same home in Warwick, Rhode Island since 1963.

Marion inherited a Wallace Nutting picture from her father, titled "An Afternoon Tea". They attended local auctions, and in 1989 attended a Wallace Nutting auction by Mike Ivankovich in Framingham, Massachusetts.

They met George Monro at an auction in Copake, New York. They became members of the Wallace Nutting Collectors Club, and have been valuable members ever since.

Harry Bejian was born at home in Providence, Rhode Island on September 20, 1933. He joined the Army on December 11, 1953 and was sent to Fort Dix, NJ; Fort Jackson, SC; Fort Campbell, KY for airborne training, and Fort Benning, GA.. He served in the Army until 1955. Harry worked for the Narragansett Brewery for five years, and then worked for Wayne Distributing for twenty years. He retired in 1995. Harry is an avid fisherman and spent two weeks in Alaska in 1985, 1986 and 1987 salmon fishing. He had to be flown in by airplane, and spent a week on Kodiak Island and a week on Afognak Island.

Marion J. Papp was born in New Britain, CT on February 1, 1938. Her father worked for Sears Roebuck. They moved to Norwich, CT for two years, and then transferred to Providence, Rhode Island. Marion Bejian worked for Amica Insurance for six years. From 1995 to 2005 Marion and Harry were dealers at the Brimfield Antique Show in Brimfield, Massachusetts, specializing in ogee mirrors, collectibles and antiques.



HOBBIES

Harry and Marion have an outstanding collection of Wallace Nutting pictures, including florals and architecturals, books, and furniture. Besides fishing, Harry is an avid gardener and maintains the cemetery that adjoins their property.



Four years ago Harry rescued an abandoned kitten that he named "Spooky". Harry has an extensive collection of Narragansett and Rhode Island beer memorabilia. Harry stays in shape by walking up to six miles a day. Marion has extensive collections of dolls, milk bottles, majolica and salt glazed pottery.

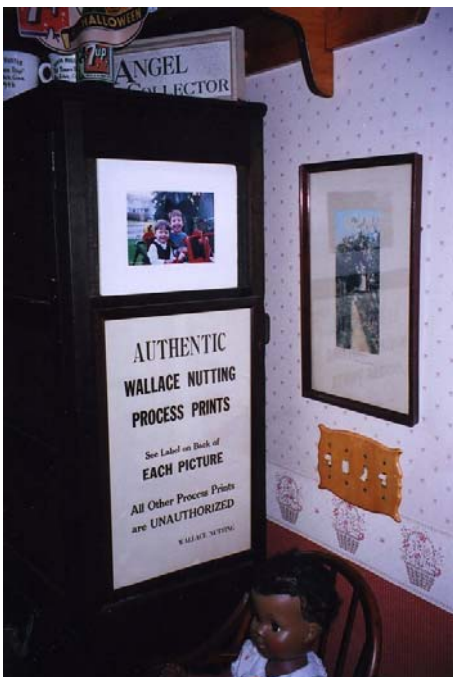
Marion enjoys doing crafts, cross-stitch, knitting, and making jewelry. Marion and Harry have traveled to Italy, France, Spain, the Mexican Riviera, as well as California, Alaska and Las Vegas.

They are active in the Shawomet Baptist Church. Marion is a former church clerk, has run the Christmas Bazaar, is a member of Busy Hands, and works in the thrift store.

We are very lucky to have Harry and Marion Bejian as members of the Wallace Nutting Collectors Club. Not only are they avid collectors, attend the conventions and auctions, they are also friends!



*More pictures from the
Bejian's Wallace Nutting
& Other Collections*



*More from the Bejian's
Extensive Collections*



***The Mystery of the W.R. Nutting Postcard
...Solved by Barbara & John Snyder***

Barbara & John Snyder sent this note to the Ivankovich's in the summer of 2009:

"We found this postcard at an antique shop in Connecticut. It was being sold as a 'Wallace Nutting Postcard' dated 1907. We did some research (attached) and believe the 'W.R. Nutting' copyright is William Rufus Nutting (a cousin) who headed a grape and raisin empire in California.

The postcard was sent from Los Angeles on May 26, 1907 and arrived in Newburyport, Mass. on May 30. Amazing: Cross-country postal service in 1907 was as good as (if not better than) today.

We thought you'd find this interesting."

Indeed we did, and as the Newsletter Editor, I thought this would be great information and further research for the Club Members.



The Snyder's found and have provided the following page copies from the Nutting Genealogy, by Rev. John Keep Nutting. It has sorted out and solved the mystery of who W. R. Nutting was.

For any of you who would like to reference the entire Genealogy book, [click here to access it online at Google Books](#):

Note date sent:



Note date received:



NUTTING GENEALOGY

A RECORD OF SOME OF THE DESCENDANTS .

OF

John Nutting, of Groton, Mass.

BY

REV. JOHN KEEP NUTTING

SYRACUSE, N. Y.

C. W. BARDEEN, PUBLISHER

1908

INDEX

7

Isaiah Hall Nutting	131
Inductive English Grammar	131
George French Nutting	131
Daniel Chaplin Nutting	132
The Rev. John Keep Nutting	133
Timothy Dwight Nutting	136
His tin horn eight feet long	136
The Rev. William Jarvis Gregg Nutting	137
<i>The Chamberlain branch.</i>	137
The Rev. Jacob Chamberlain	138
William Isaac Chamberlain	141
Benjamin Franklin Nutting	115, 264
Mary Adelaide Nutting	144
George E. Nutting	146
Truman Nutting	154
Mary Eliza Nutting	155
Andrew J. Nutting	159
Col. Lee Nutting	159
Eighth generation	162
Newton W. Nutting	162
James Ralph Nutting	164
Mrs Amy Belle Nutting Irish	165
→ The Rev. Wallace W. Nutting	166
Cordelia A. Gilman Nutting	169
Maria Gilman Nutting	170
→ William Rufus Nutting	171
The Rev. John Danforth Nutting	172
Ruth Nutting	174
George Hale Nutting	176
<i>The Patch branch</i>	176
<i>The Bardeen branch</i>	180
<i>The Bennett branch</i>	187
Daniel Chaplin Nutting	190
Jessie Gulielma Nutting	193



REV. WALLACE W. NUTTING, D. D.



NUTTINGHAME, Southfield, Conn., Residence of Rev. Wallace W. Nutting, D. D.

EIGHTH GENERATION

165

VI Ch: of **g 32 Stephen** 7, Luther (New Haven, Vt.) 6, Daniel 5 (Westford), Daniel 4, 3, John 2, 1. m Mary Jenette Palmer.

h 28 Caleb L. 1859. m Effie B. Bissell, 1889. Has one son, Harold B., 1890. Lives at Medford, Mass.

VII Ch: of **g 43 Benjamin Franklin** 7, Asia 6, Daniel 5, 4, 3, John 2, 1. Westford. m Josephine Nichols.

h 29 Elmer E. A machinist.

h 30 Amy Belle (Mrs George F. Irish). Mr Irish is a pattern-maker. Benjamin F. was a skilled stone-cutter. Mrs Irish has been my faithful helper in the present work, with the advantage of living on the spot once owned and occupied by our Founder (see page 95). She has procured nearly all the views from Westford and Groton which we use in this volume. We owe her very much. She appears to be not doubtfully one of our race; she has the characteristic energy and versatility. See portraits, pages 52, 122.

VIII Ch: of **g 48 William.** m Susan Foye.

h 31 John Day, m (1) Sarah E. Pratt, (2) Anna T. Bartlett.

h 32 Abel (8). m Elizabeth White.

h 33 Walter Edward Hawes. m Susan R. Stoddard, of Quincy, Mass, where he lives.

h 34 Charles Augustus. m Isadore Parsons.

h 35 Joshua Hanson. m Arvilda M. Bartlett.

h 36 Eunice Adelaide. m Henry F. Gray. Ch: a son and dau. both d in inf. m (2) Bryant N. Adams. Three infant children of William above, d at Lowell.

→ IX Ch: of **g 49 Albion** 7, Seth 6, Abel ("The musketeer") 5, Daniel 4, 3, John 2, 1. m...Fifield, of Maine. Albion was an inventor, and sewing-ma-

(WN's Father, Albion)

EIGHTH GENERATION

167

chine mfr. He died in the service, early in the Civil War. His son

→ **h 37 Rev Wallace W., D. D.**, b. at Rock Bottom, Mass, 1861, graduated from Augusta (Me.) high school, Philips-Exeter academy, Harvard college, Hartford and Union seminary. Pastor at Newark, N. J. Ordained pastor Park Ch., St. Paul, Minn.; pastor Plymouth Ch., Seattle. Received his degree from Whitman College. Called to Union Ch., Providence R. I., where he served ten years. Health failing, was ordered to an out-door life, and made an occupation of art-photography, in which he was already expert. Soon achieved as wide a repute in art, as before in the pulpit (which is saying much). His work grew to a great business, requiring a company for its management. He bought a 400-acre tract on the Pomperaug, near Southbury, Conn., and made it into "A Photographer's Farm". He rebuilt an ancient mill for sawing and grinding, modernized the old dwelling (part of which is two centuries old), and added an immense new barn, which shelters two hundred cows, "selected with a view to photography—and milk". Calls the place Nuttinghame (see ill. page 168), and has incorporated the Nuttinghame Co. to run the art business. He married, 1888, Mariet Griswold Caswell. Has been abroad several times.

I had the pleasure of hearing him preach several years since, and of some slight acquaintance. We have also corresponded occasionally for many years. I hope for further acquaintance.

X Ch: of **g 51 Charles P.**, of New Ipswich, 7, Ezekiel 6, 5, 4, Daniel 3, John 2, 1. m Sally J. Manly.

h 38 Lillie J. m Frank M. Dow. Lives at Paugus, Mass.

EIGHTH GENERATION

171

h 57 Clara Mabel Violet, 1870. Two years at Rockford; Nurse's training school, Cleveland; practiced at Austin, Minn, and there m **William Henry Hopkins**, Hannah, N. D. (Permanent case.)

h 58 Perley Gilman Reed, 1873. In Gov't employ, Department of Standards, Washington, D.C. m **E. E. Lightfoot**.

XIV Ch: of **g 59 Rufus**, Brother of Charles and William, above. m Sarah H., dau. of Joseph D. of Groton.

h 59 Sarah Maria, 1848, d in inf.

→ **h 60 William Rufus**, 1850. Pres. American Vineyard Co., Fresno, Cal. Immense vineyards of seedless



Mrs. Celia Frenyear Nutting

172

NUTTING GENEALOGY

→
(Con't
from
pg. 171)

raisin grapes. 300 miles of trellis. Productiveness almost incredible. The necessary trays for drying, when stacked for storage, form a considerable building. Mr Nutting spends a part of the year in the east, distributing, and taking orders for future delivery. He m Celia Frenyear, b Fairport, Vt., Nov. 10, 1849; d Berkley, Cal., Nov. 1, 1906.

h 61 Rev. **John Danforth**, 1854, Wheaton Coll., Ill.; Oberlin Theol. Sem. Pastor Wauseon, O., Newport, Ky. St. Louis, Mo., Plymouth Ch., Salt Lake City. After



Rev. John Danforth Nutting

some years study of the work among the Mormons, it seemed to him wise to copy their own "missionary" methods. He came east, organized The "Utah Gospel

"Comfort"...and... "A Cat"
by Ruth & Dieter Tannenberg

About 15 years ago, our daughter Diana bought a Wallace Nutting picture at an Antique shop in Pennsylvania. It was in horrible condition ~ water spots all over ~ faded image. We did not think much of it; however, a few years later, we spotted a booth full of Wallace Nutting pictures (Jim Eckert) at a flea market in St. Charles, Illinois and we bought a picture as a gift for Diana and another one and suddenly we were interested. Jim Eckert suggested we see Pam and Bob Franscella (at that time in Wisconsin). We called them and visited their home. Pam and Bob were gracious and told us all about Wallace Nutting and we bought a few ~ that really got us started. They suggested that we become Club members and that we attend the Nutting Auctions on the East Coast.

In 2000 we visited Sue and Mike Ivankovich in Doylestown, Pennsylvania while we were on a trip to visit our daughter in New Jersey and also bought a few Nuttings. We now own 269 Wallace Nutting and 23 Fred Thompson Pictures. We have no wall space left and yet at the last auction in Danbury, we bought 15 more, bringing our total to 284 Nuttings. In addition, we have purchased and given as gifts to Diana and to friends, 85 Nuttings and 7 Fred Thompsons.

We don't particularly care to collect interiors but we love animals. At the "Discovery Auction" in Danbury, there was an unframed and unmatted "Comfort and a Cat" ~ we loved the right side of the picture containing the cat. What should we do? Cut the picture in half? Why not! Our daughter Diana, the professional artist, suggested that we cut the image just to the right of the candle shadow on the fireplace mantle. It turned out to be the exact center of the image. We now have two close framed hand colored photos ~ "Comfort" (a gift for a friend that likes interiors) and "A Cat" (for our collection) ~ see photos below.



The original picture as it was bought...unframed and unmatted



The picture divided in half, prior to framing



"Comfort".....and....."A Cat"

***An Adventure in Rhode Island:
Locating Wallace Nutting's House & Betsy Williams' Cottage***
by Linda & Dan Palmer and Marion & Harry Bejian

We recently visited the Bejians, and embarked on a Wallace Nutting adventure to locate Wallace Nutting's home in Rhode Island. The Bejians own a picture titled, "Nutting House Providence", and a picture of Betsy Williams's cottage in Roger Williams Park. Thanks to Harry we located Nutting's house on 211 Wentworth Avenue in Cranston, RI. It is across the street from Roger Williams Park on the corner and abuts a cemetery. The house has changed very little, and the detached garage has a very unusual curved roof line and cupola. The Betsy Williams cottage is located in Roger Williams Park. Nutting took other pictures in Roger Williams Park.



Above: "Nutting House, Providence" and below, the same house & garage today





Above: An untitled Wallace Nutting of Betsy Williams' Cottage in Roger Williams Park. And below, the same red house, although less adorned with flowers, as it stands today.



Announcing the

***2010 Wallace Nutting Collector's
Club Annual Convention***

will again be held in the Hartford, CT area

May 14 – 15, 2010

at the Hilton Garden Inn

85 Glastonbury Blvd.
Glastonbury, CT 06033

860-659-1025



WNCC special convention rate:

\$109 plus tax for double occupancy

Mention WNCC convention for special rate available through April 13, 2010

Friday, May 14 – Michael Ivankovich Annual Convention Auction

Saturday, May 15 – Wallace Nutting Exhibitors Buy/Sell/Trade
Wallace Nutting Presentations to be announced
Visit Wadsworth Atheneum or Webb House (TBA)

Saturday evening, May 15 – Annual Club Dinner



Wadsworth Atheneum - Hartford, CT



Webb House - Wethersfield, CT



Tribute to Don Lee, long time WNCC Member and friend to all, who passed away in the spring of 2009



Pictures taken by Linda Palmer at the November 6-7 Danbury, CT Auction



Never a dull moment at a Wallace Nutting Auction! The hotel fire alarm went off during Saturday morning's preview while breakfasts were being had and people were just waking up.

They cleared out the hotel and brought in the fire trucks, but luckily it was a false alarm. Pictured below are Joe Duggan & Harry Bejian.

Mike ignored the alarm and stayed in the ballroom with the auction pictures. He said his worst fear was the sprinkler system opening up and spraying all over the pictures!

Thankfully, no water was involved, and the auction began right on time.





Lloyd & Elizabeth Elliot

**More
photos
from the
Danbury
Auction**



Harry Bejian



Our ever faithful staff, from Kevin & Lynn Caffrey, to Jake Hyde, and runners Kayla Hyde & Maggie Loftus with "watchdog", Lisse

**The Wallace Nutting
Collectors Club
Newsletter**

is published semi-annually by the:

**Wallace Nutting
Collectors Club**

121 Orchard Hill Road
Elmira, NY 14903

e-mail address:

wncc@anchorstatebank.com

Membership Dues:

\$30 annually

Newsletter online contact:

Sue Ivankovich

sue@wnutting.com

Board of Trustees:

Jan Liberatore, President
Pam Franscella, Vice President
Jim Eckert, Treasurer
Joe Duggan, Secretary
Joyce Fishback, Trustee
Sharon Lacasse, Trustee
Ron Leavesley, Trustee

**Founders of the Wallace
Nutting Collectors Club:**

the Late George & Justine Monro

Web Address:

www.wallacenutting.org



Wallace Nutting 1861-1941

From the Newsletter Editor...

Many thanks to Barbara & John Snyder; Marion & Harry Bejian; and to Linda & Dan Palmer who provided articles, information, and pictures for this issue. And of course many thanks always to President, Jan Liberatore, for his newsletter lead-off messages each time and superb guidance with our Club.

Please help with the continuation of the Club Newsletter by contributing articles, photos, regional auction results, fun information...any and all of the above. It doesn't have to be a lengthy article...we just appreciate your input! If you have some thoughts or suggestions, e-mail or call so I can plan for the Spring/Summer 2010 Edition.

Sue Ivankovich

P.O. Box 1536 * Doylestown, PA 18901
215-345-6094 * E-Mail: sue@wnutting.com

